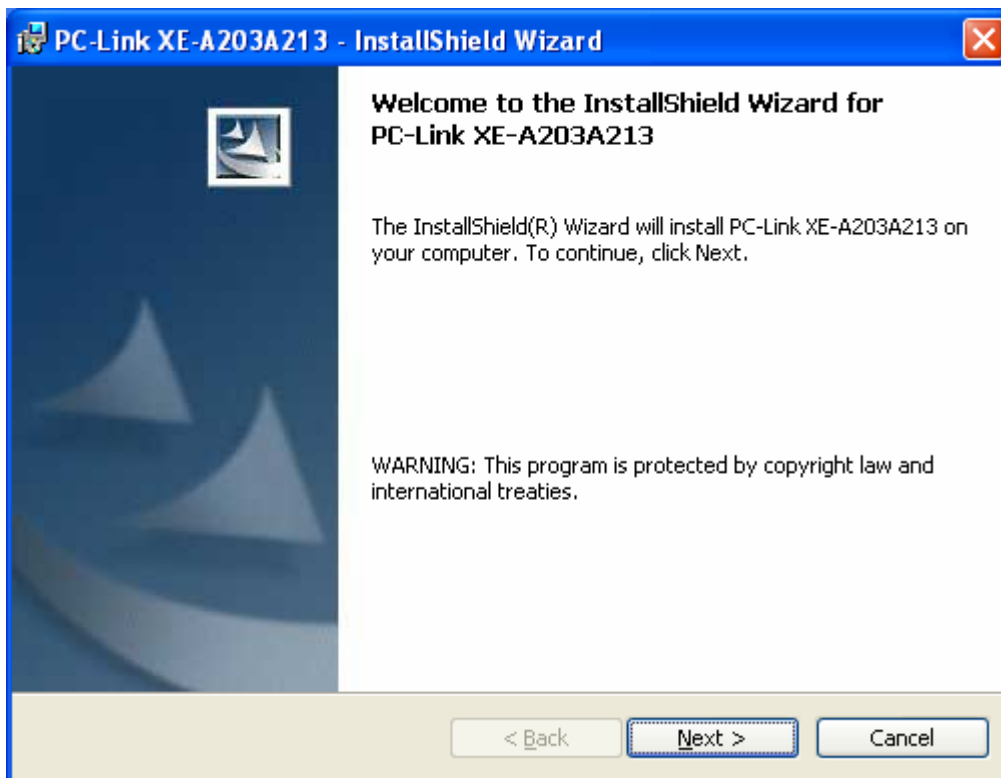


Install manual

Please use it by the user with administrator privilege.

Please install Easy Programming Tool first

Click setup.exe.



Read the WARNING, and click [Next].

**PC-Link XE-A203A213 - InstallShield Wizard**

**Customer Information**  
Please enter your information.

User Name:  
[ ]

Organization:  
[ ]

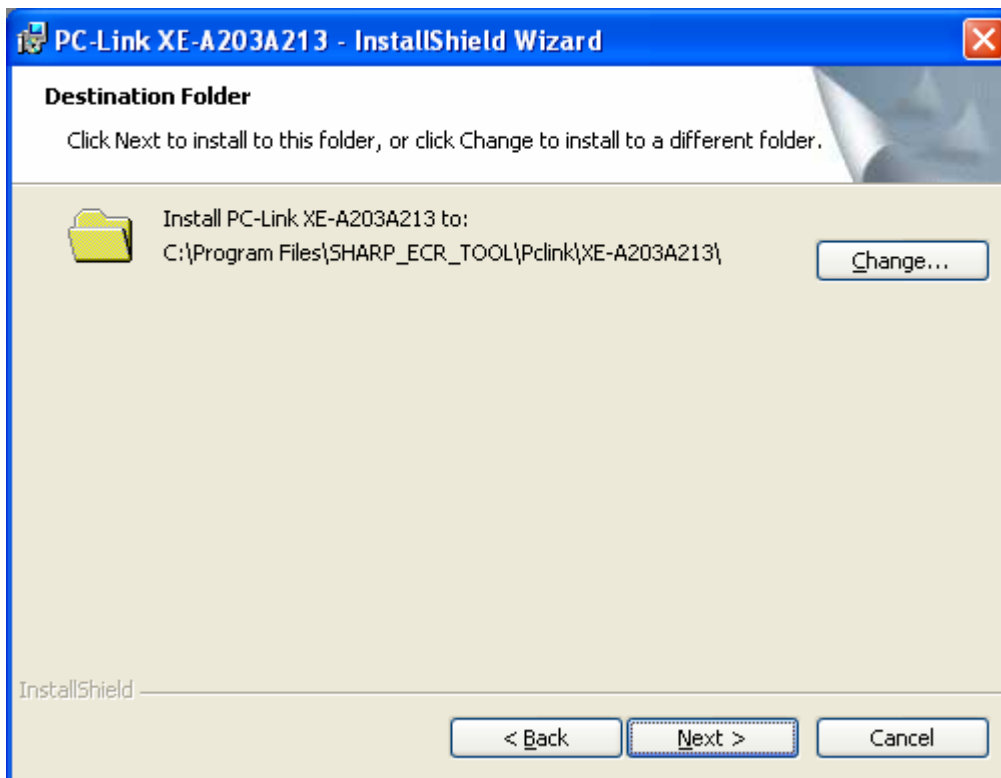
Install this application for:

- Anyone who uses this computer (all users)
- Only for me (user)

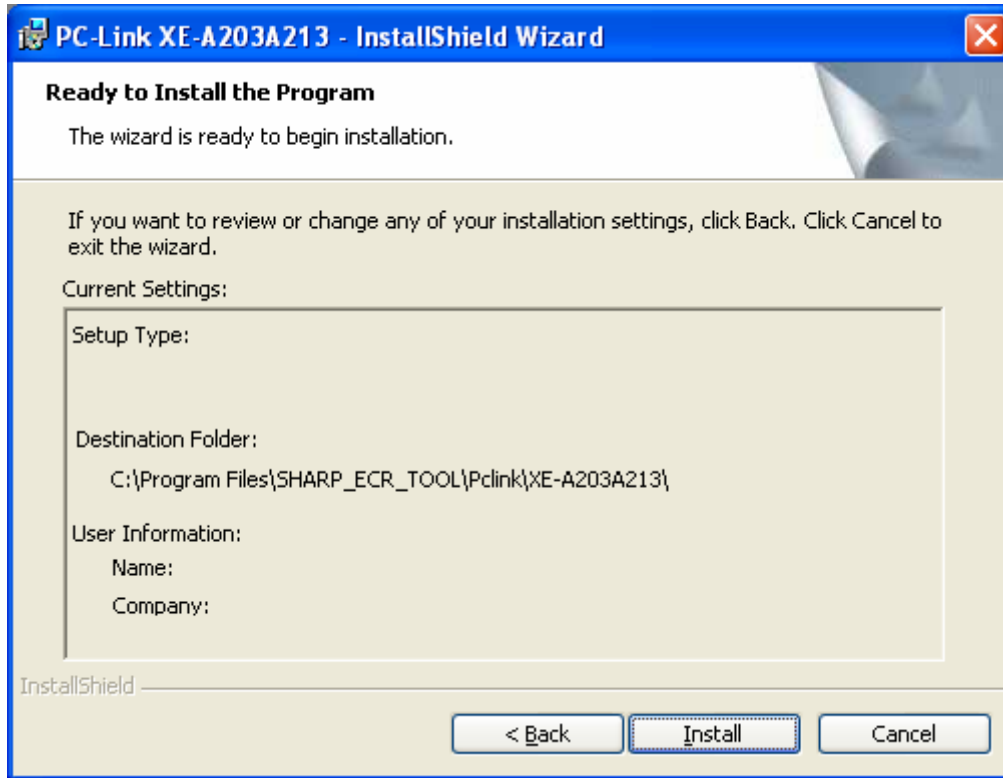
InstallShield

< Back    Next >    Cancel

Input the Customer Information, and click [Next].



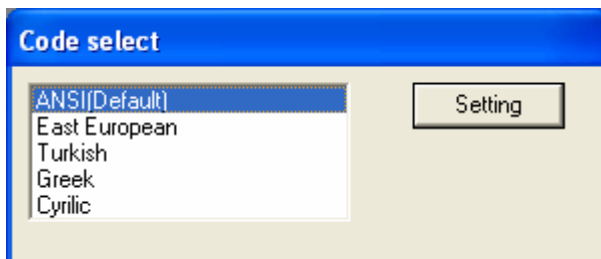
Make sure your Destination Folder is all right, and click [Next].



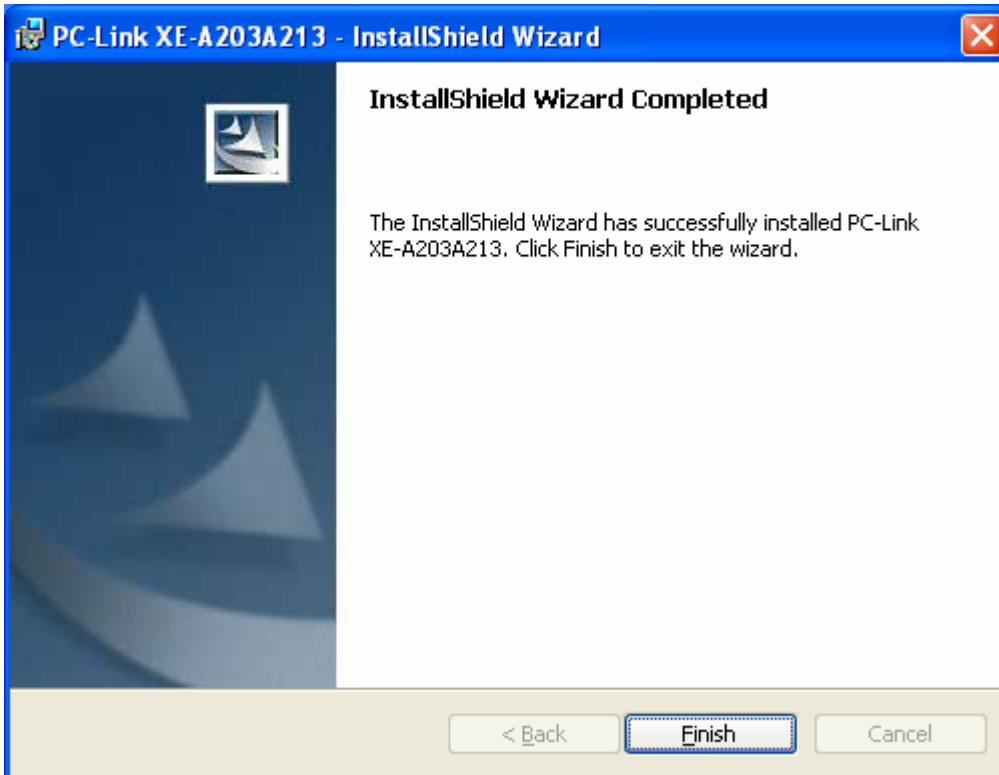
Make sure the information on the screen is all right, and click [Install]. The installation starts.



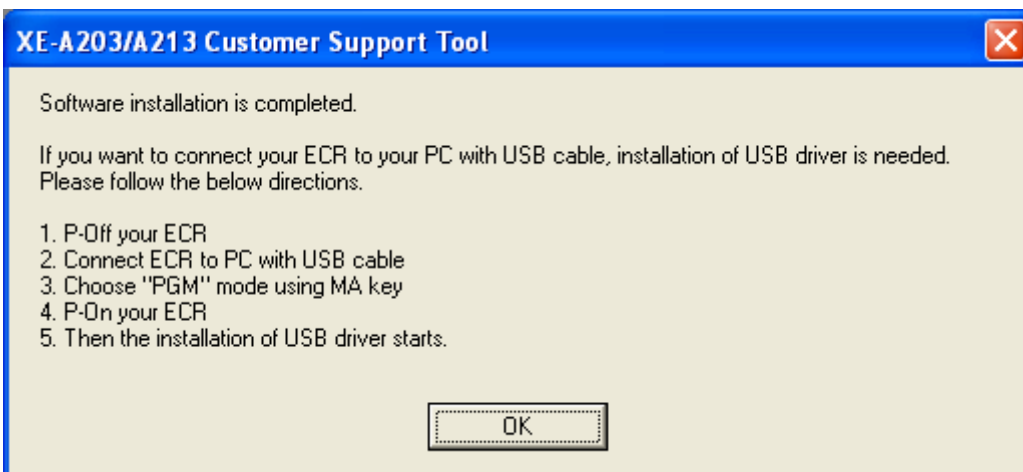
If the screen below appears during the automatic installation, be sure to click [Continue Anyway].



Select language and click [Setting].



When the program is installed successfully, the screen appears. Click [Finish].



Click [OK].

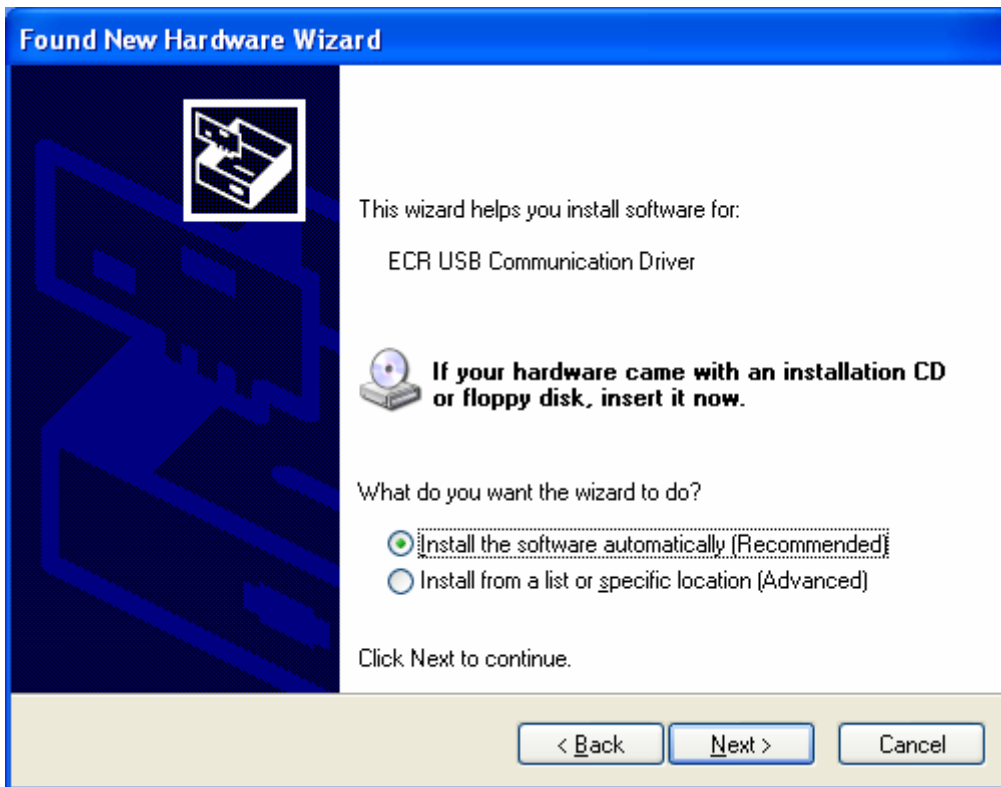
Next, you must do the follow.

1. P-Off your ECR
2. Connect ECR to PC with USB cable
3. Choose "PGM" mode using MA key
4. P-On your ECR

PC displayed as follow.



Select the No, not this time and Click to [Next]

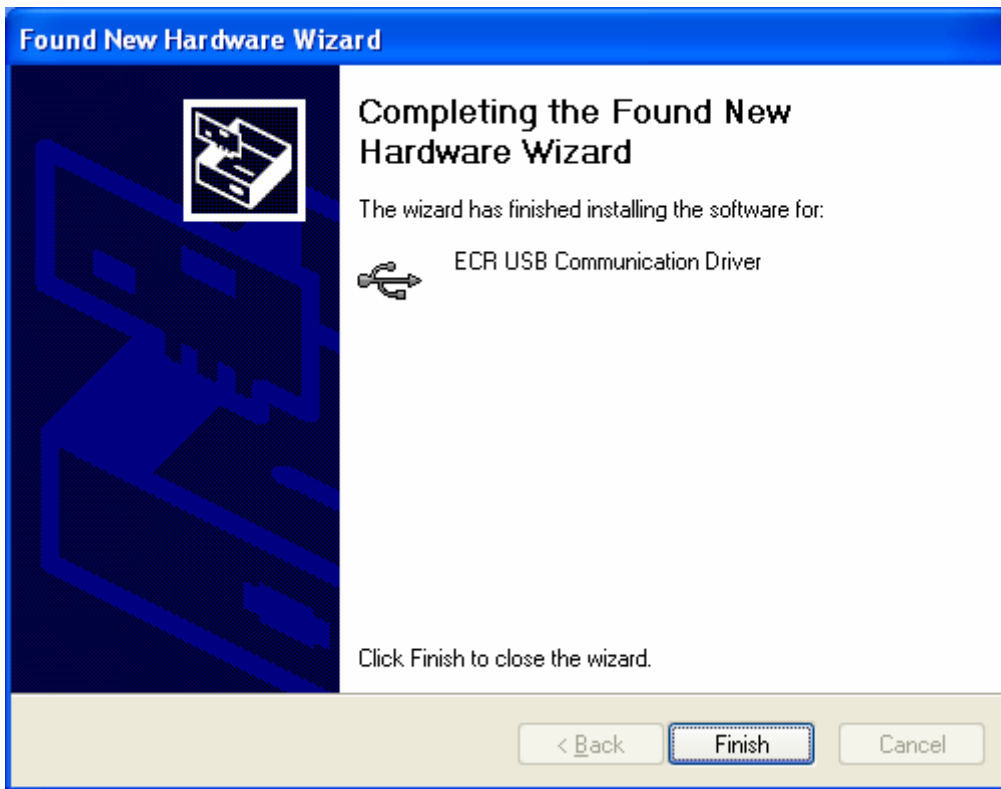


Select the Install the software automatically and Click to [Next].



Click to [Continue Anyway].





Click to [Finish].